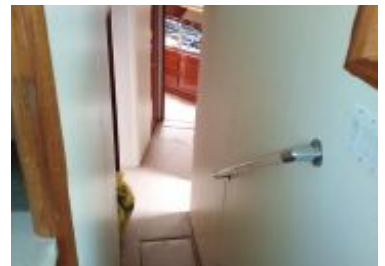


50 ft 2000 Viking Convertible  
**US\$499,000 Tax: N/A**  
 Panama City, Panama



**Boat Details**

Make:	<b>Viking</b>	Class:	<b>Sport Fishing</b>	Fuel Type:	<b>Diesel</b>
Model:	<b>Convertible</b>	Hull Material:	<b>Fiberglass</b>	Max Speed:	<b>35 kn</b>
Year:	<b>2000</b>	Beam:	<b>16 ft 4 in</b>	Max Draft:	<b>4 ft 9 in</b>
Length:	<b>50 ft</b>	Boat Location:	<b>Panama City, Panama</b>		
Price:	<b>US\$499,000</b>	Berths:	<b>3</b>		
Condition:	<b>New</b>	Heads:	<b>3</b>		

**Fernando Aragon | PANAMA YACHT GROUP**

Torre de las Americas Tower B 2nd floor Office 205, Panama city, Panama

Tel: **+50769596919**

[sales@panamayachtgroup.com](mailto:sales@panamayachtgroup.com)

[www.faragonmarine.com](http://www.faragonmarine.com)



## Description

BECKY LU is a Viking 50' convertible 2000 with great owners.  
She is a champion of many fishing tournaments with lots of marlins on its history.  
Two Man motoros which were overhauled at the 3300 hours aprox each.

## Information & Features

### 2000 MAN d2840le403 (Engine 1)

Type: **Inboard** Power: **1150 hp**  
Fuel Type: **Diesel**  
Hours: **4687**

### 2000 MAN d2840le403 (Engine 2)

Type: **Inboard** Power: **1150 hp**  
Fuel Type: **Diesel**  
Hours: **7303**

### Dimensions

LOA: **50 ft**  
Beam: **16 ft 4 in**  
Max Draft: **4 ft 9 in**

### Speed

Cruising Speed: **28 kn**  
Max Speed: **35 kn**

### Tanks

Fuel: **1 x 803 gal**  
Fresh Water: **1 x 208 gal**

### Accommodations

Single Berths: **2**  
Double Berths: **1**  
Heads: **3**

### Other

Warranty: **None**  
Flag Of Registry: **Panama**

### Electrical Equipment

- Generator

## **Electronics**

- Radar
- TV Set
- Navigation Center
- Autopilot
- Compass
- GPS
- VHF

## **Inside Equipment**

- Dishwasher
  - Washing Machine
  - Oven
  - Microwave Oven
  - Air Conditioning
  - Refrigerator
  - Fresh Water Maker
- Battery Charger

## **Disclaimer**

The Company offers the details of this vessel in good faith but cannot guarantee or warrant the accuracy of this information nor warrant the condition of the vessel. A buyer should instruct his agents, or his surveyors, to investigate such details as the buyer desires validated. This vessel is offered subject to prior sale, price change, or withdrawal without notice.

